

INSTITUTO PLURINACIONAL DE ESTUDIO DE LENGUAS Y CULTURAS
INSTITUTO DE LENGUA Y CULTURA DE LA NACIÓN AYMARA
"DHC Félix Layme Pairumani"

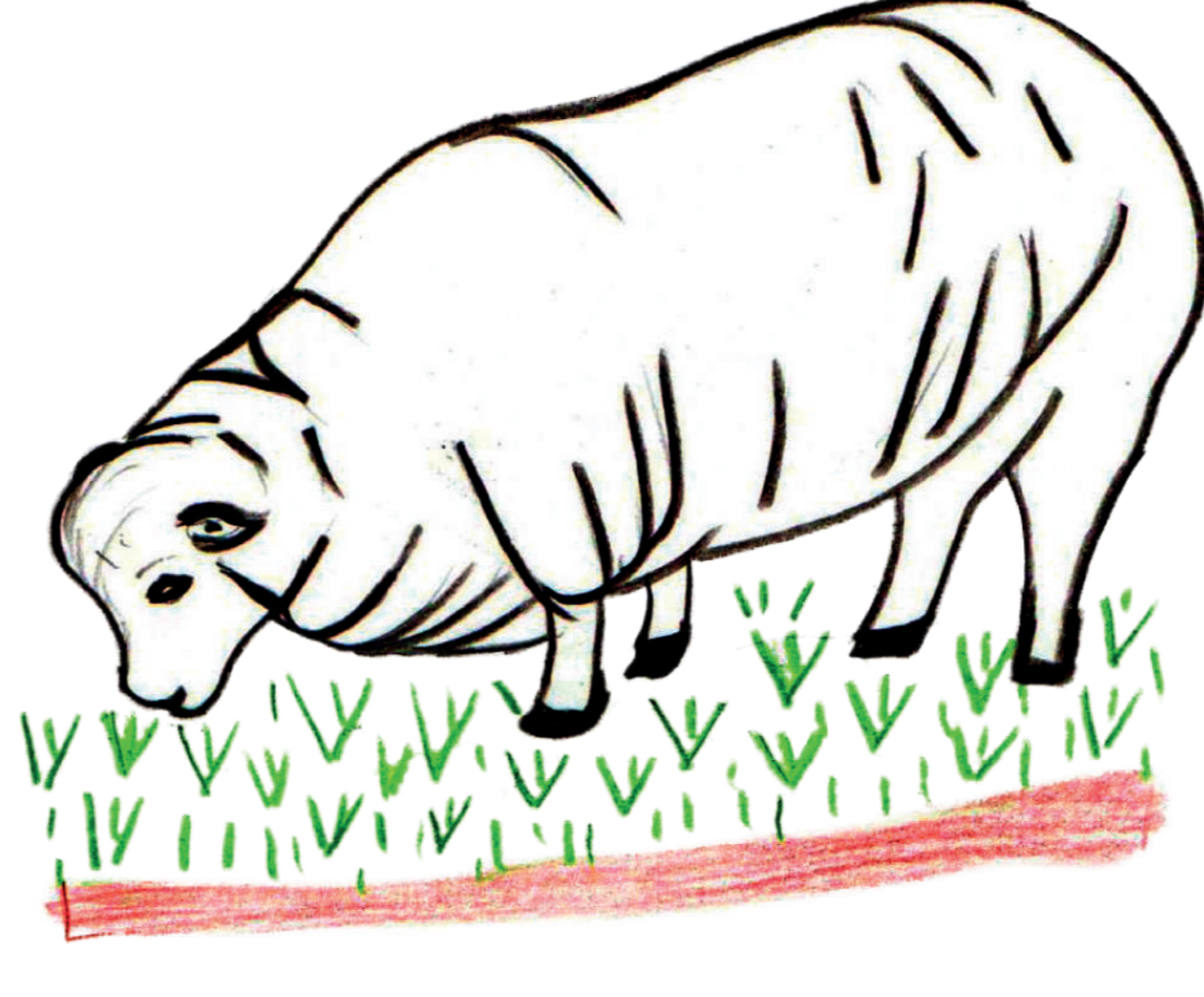
Decreto Supremo Nº 20227/2013



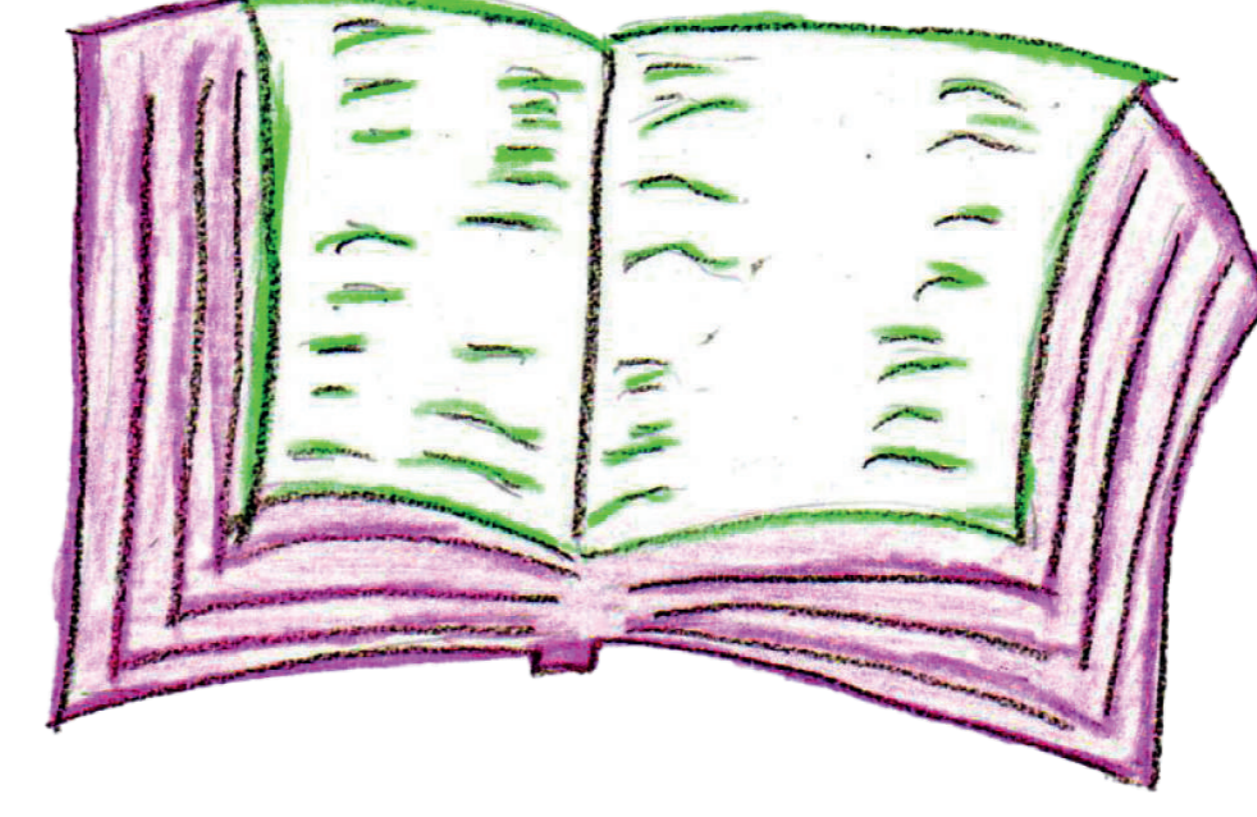
A a
Anu



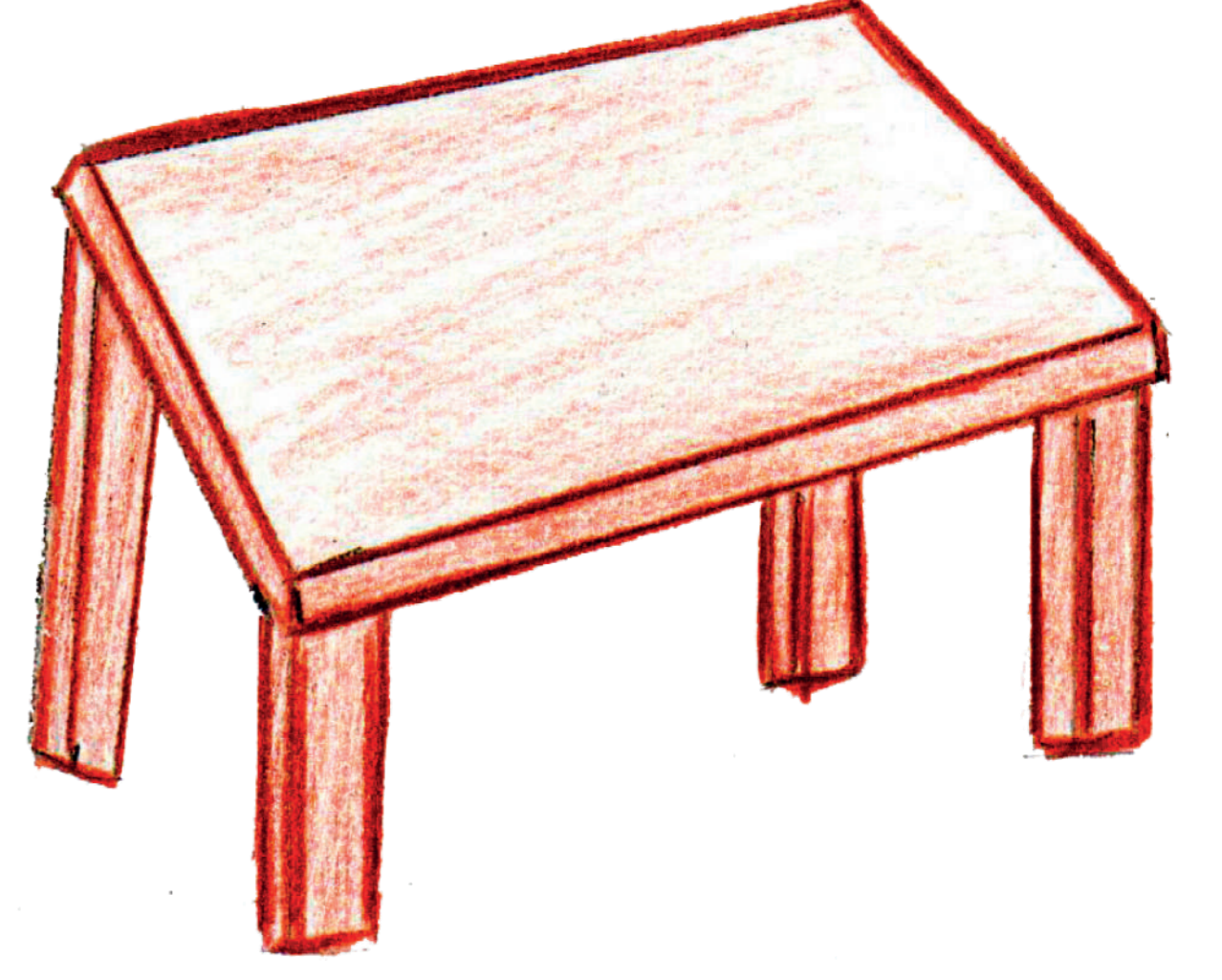
U u
Uma



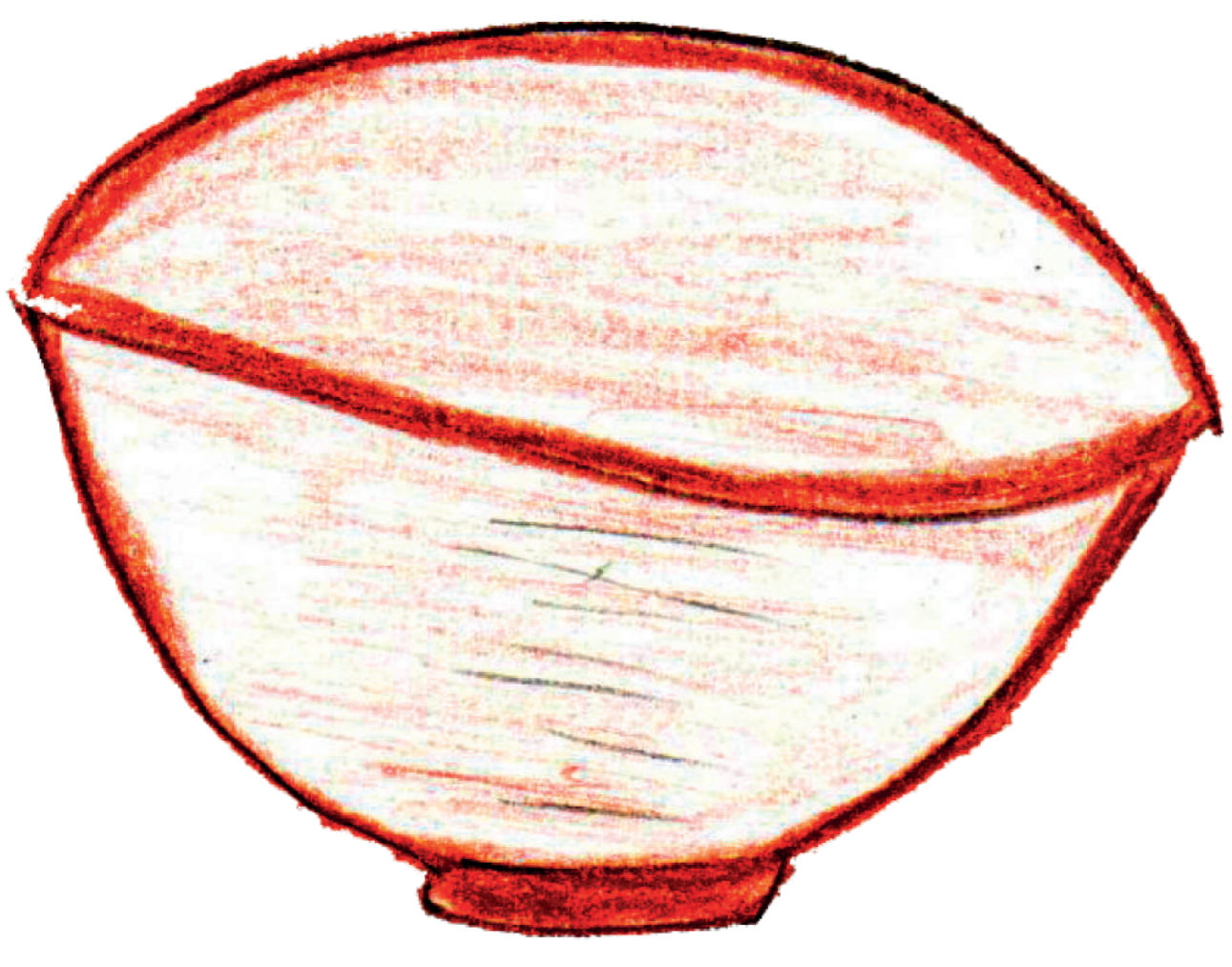
l i
Iwija



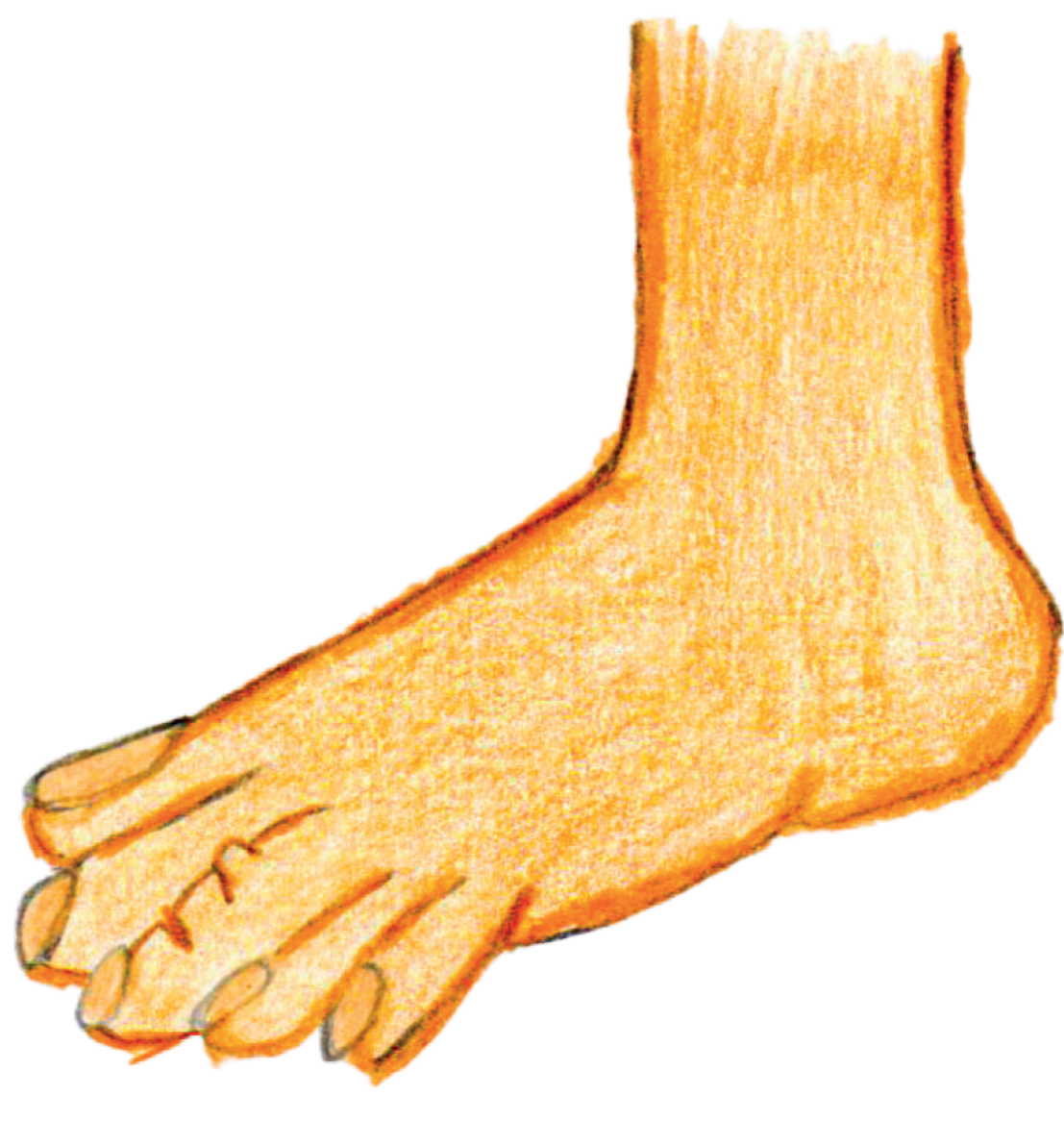
P p
Panka



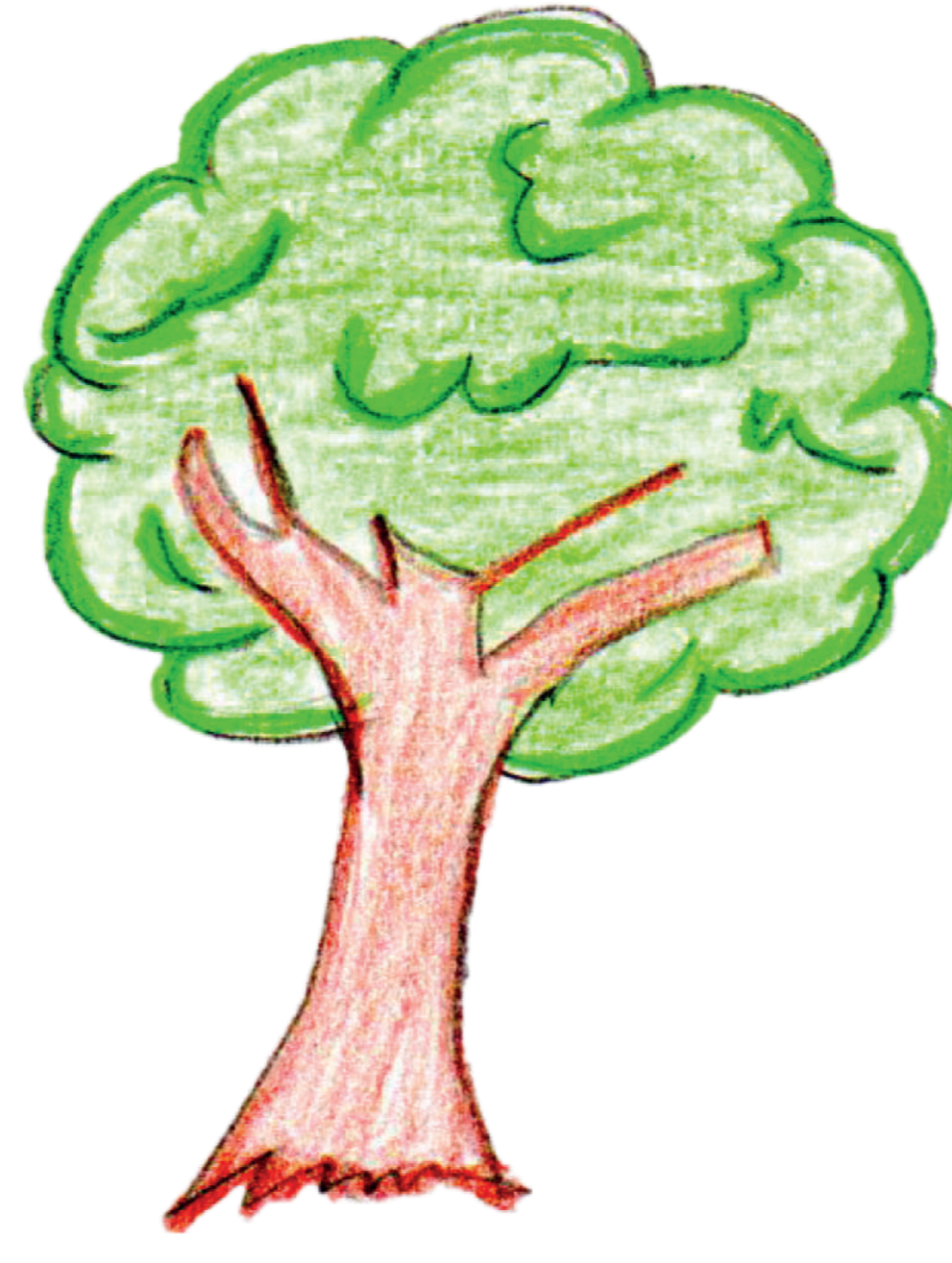
TH th
Tiwana



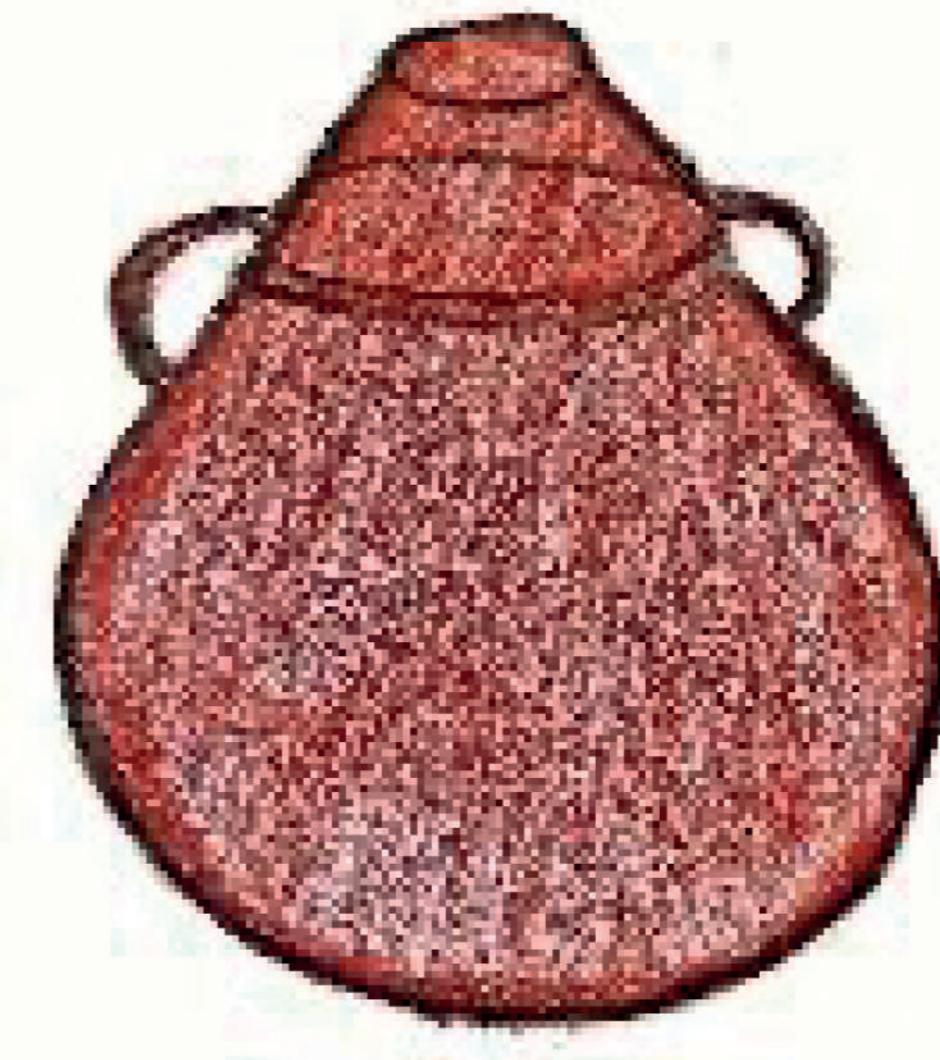
CH ch
Chuwa



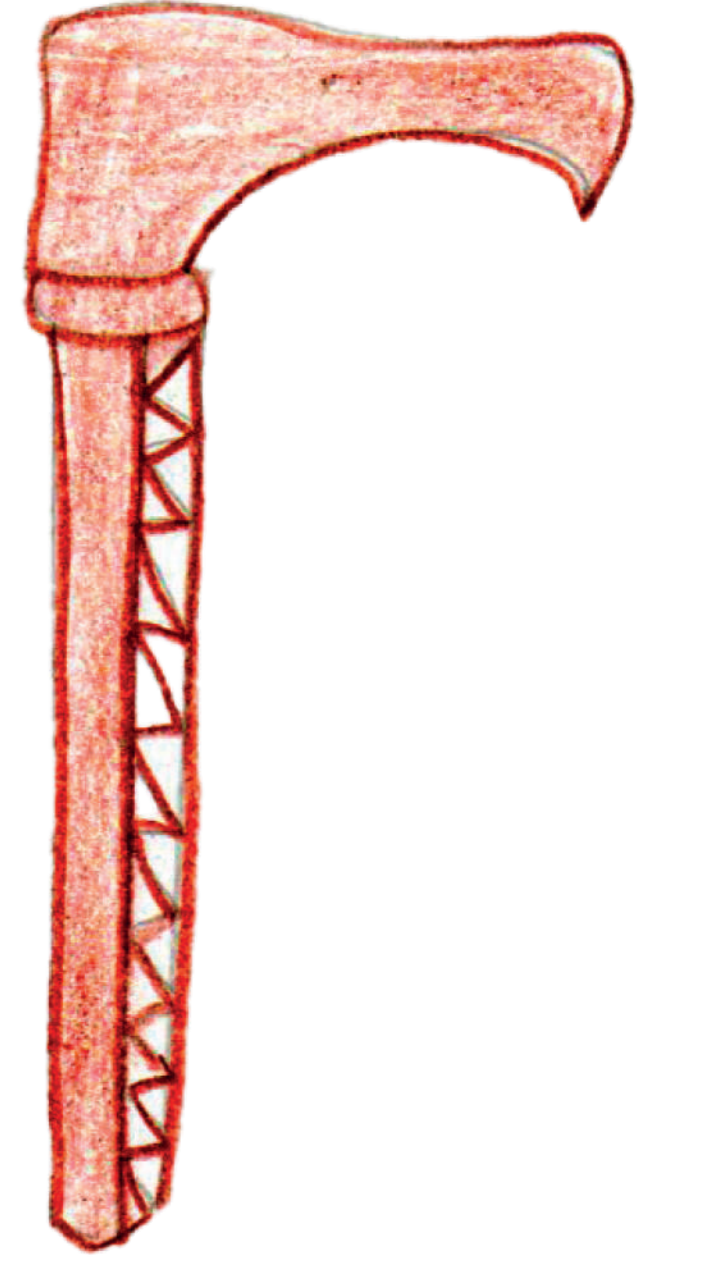
K k
Kayu



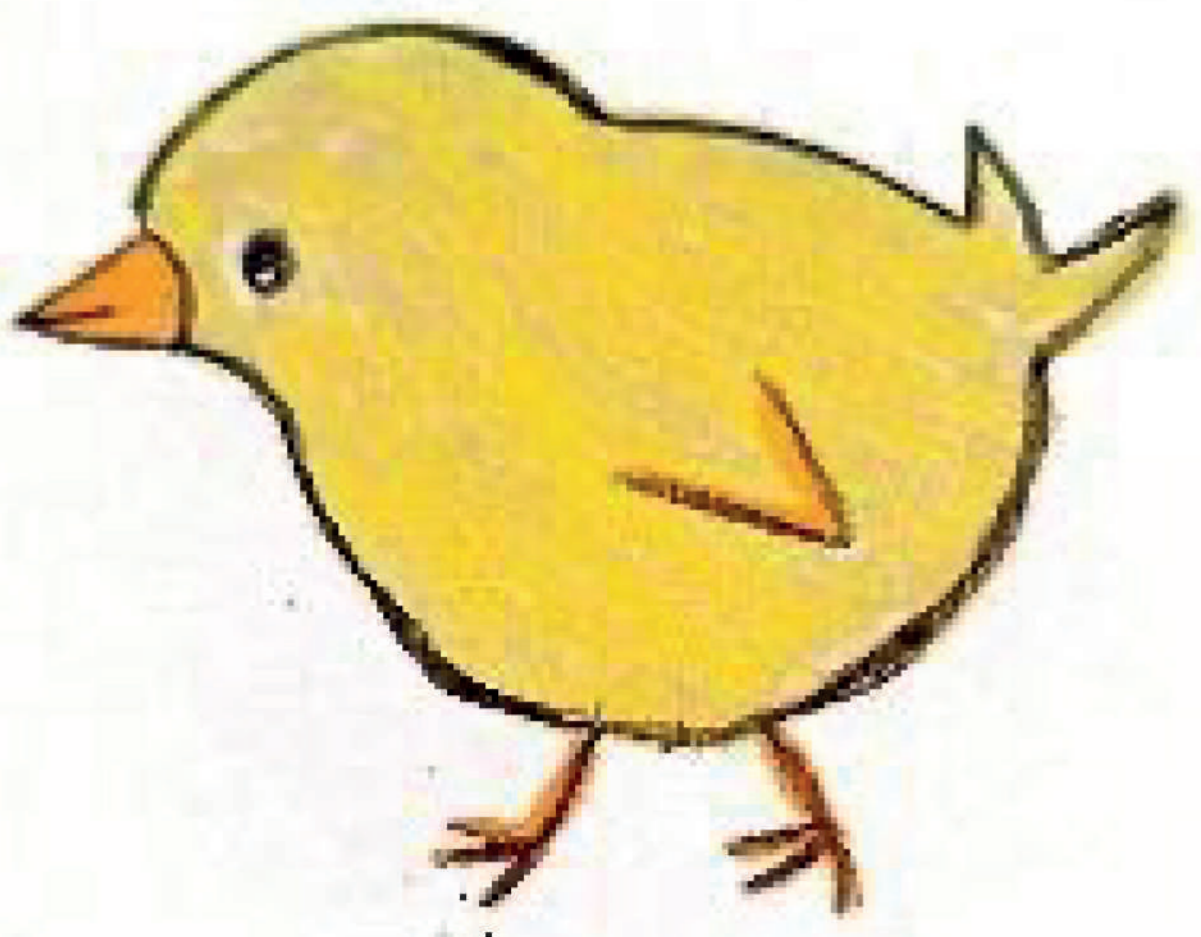
Q q
Quqa



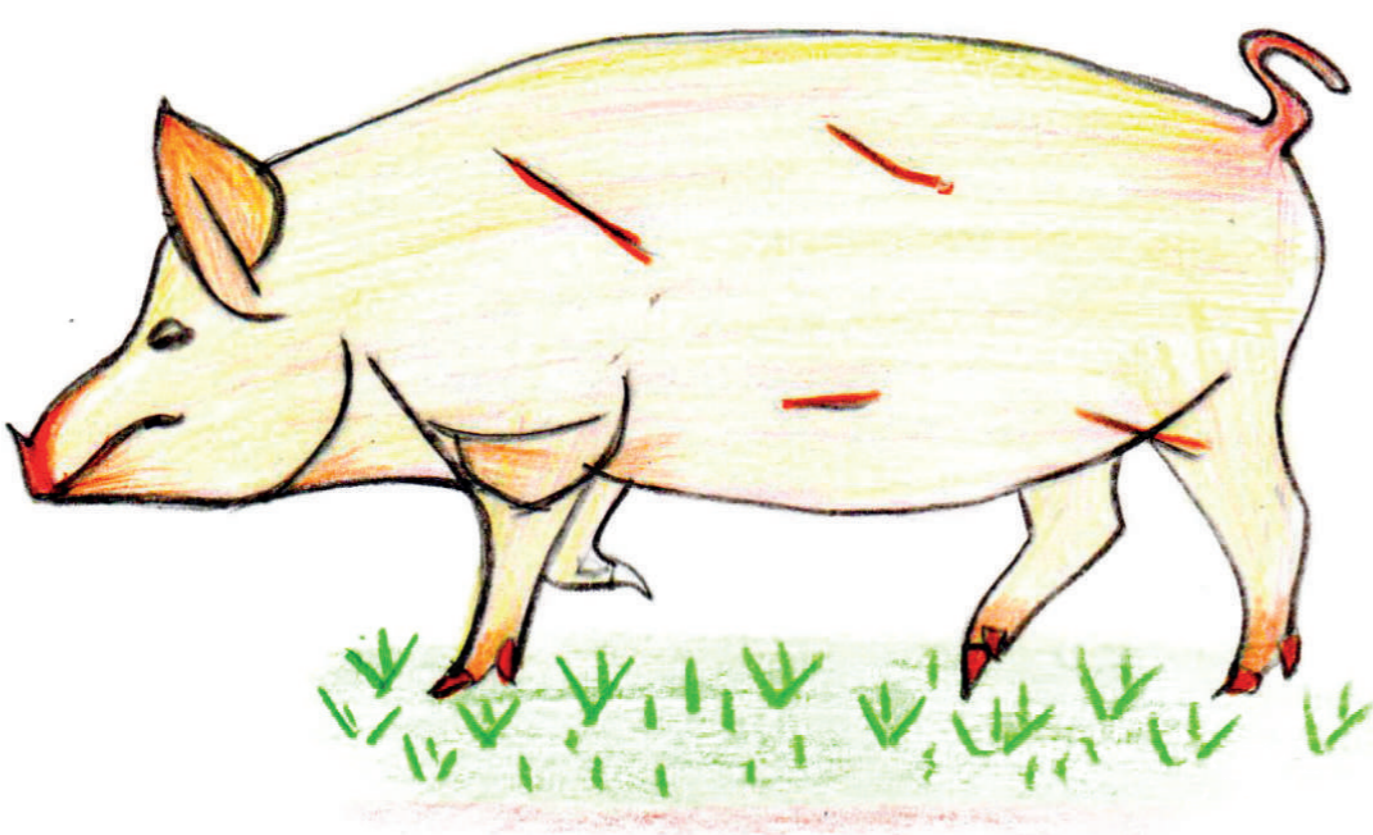
PH ph
Phukhu



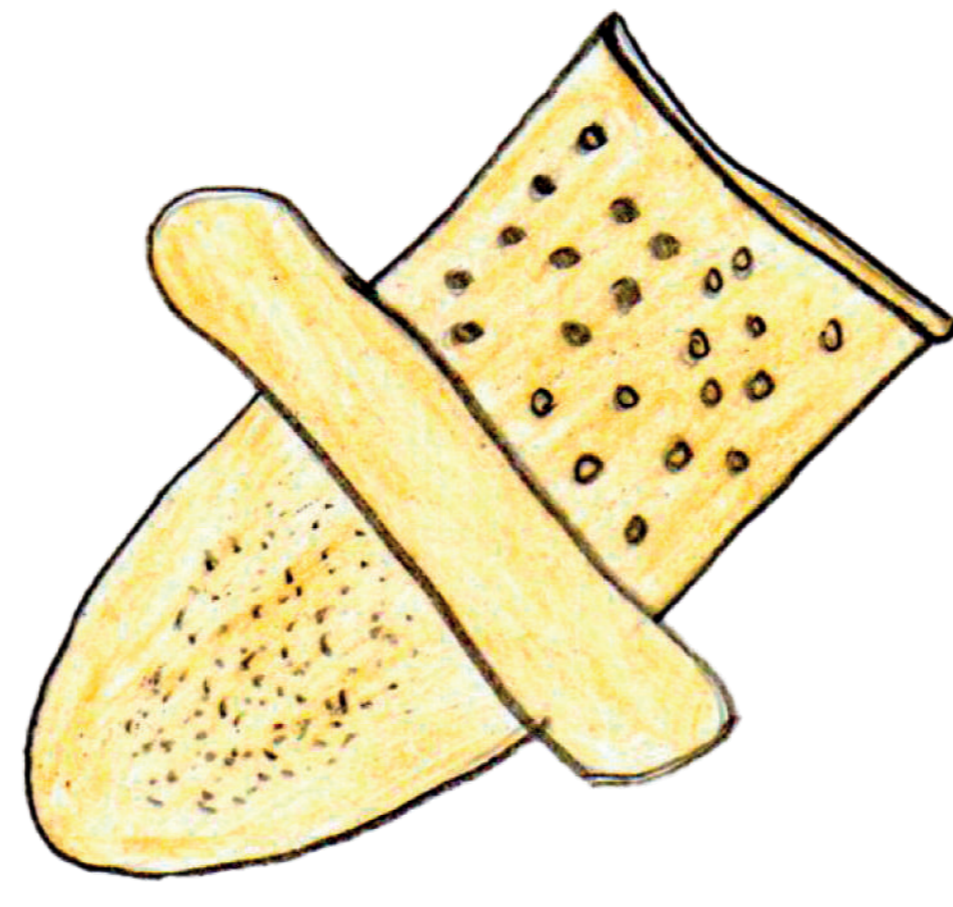
TH th
Thujru



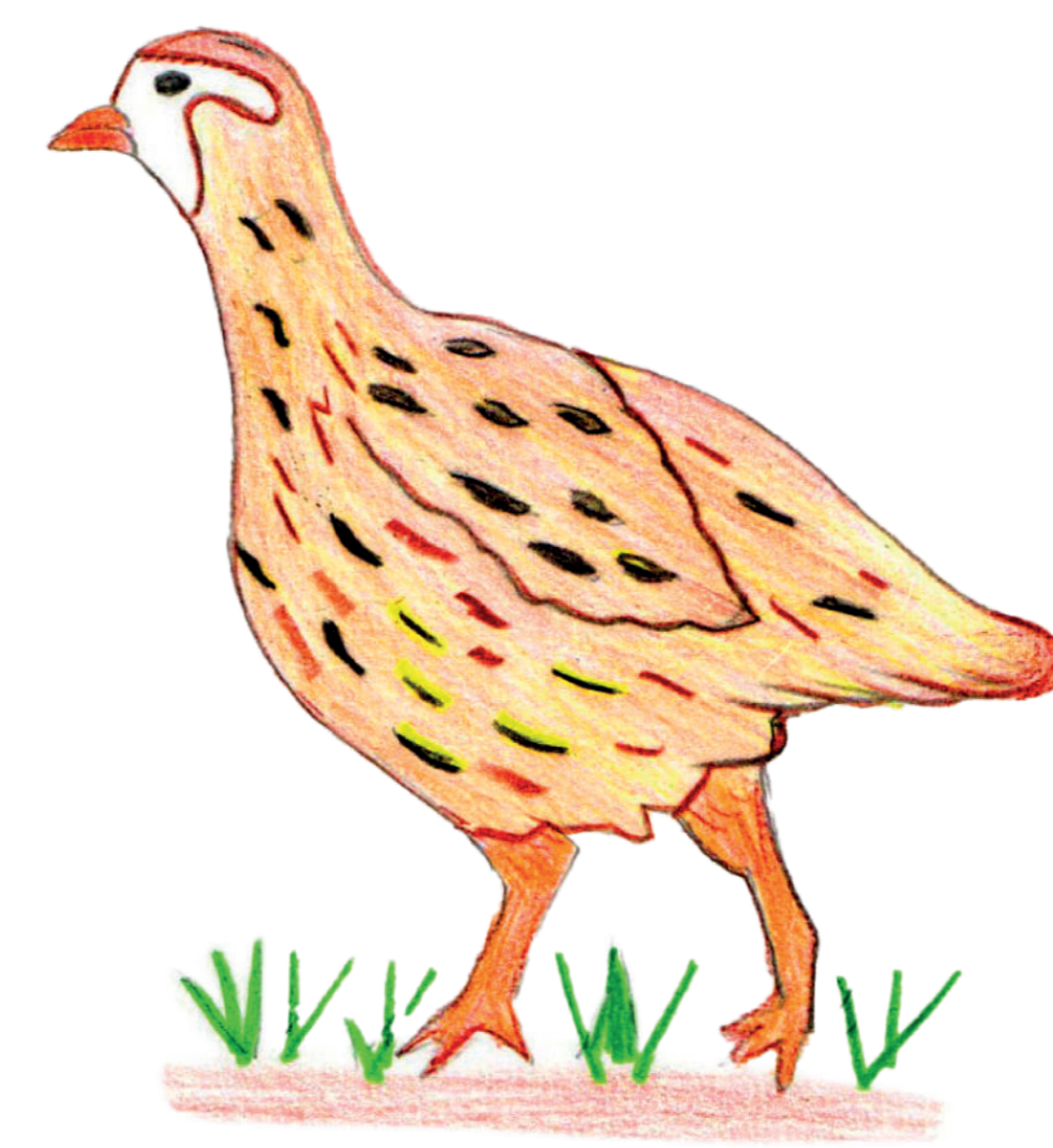
CHH chh
Chhiwchhi



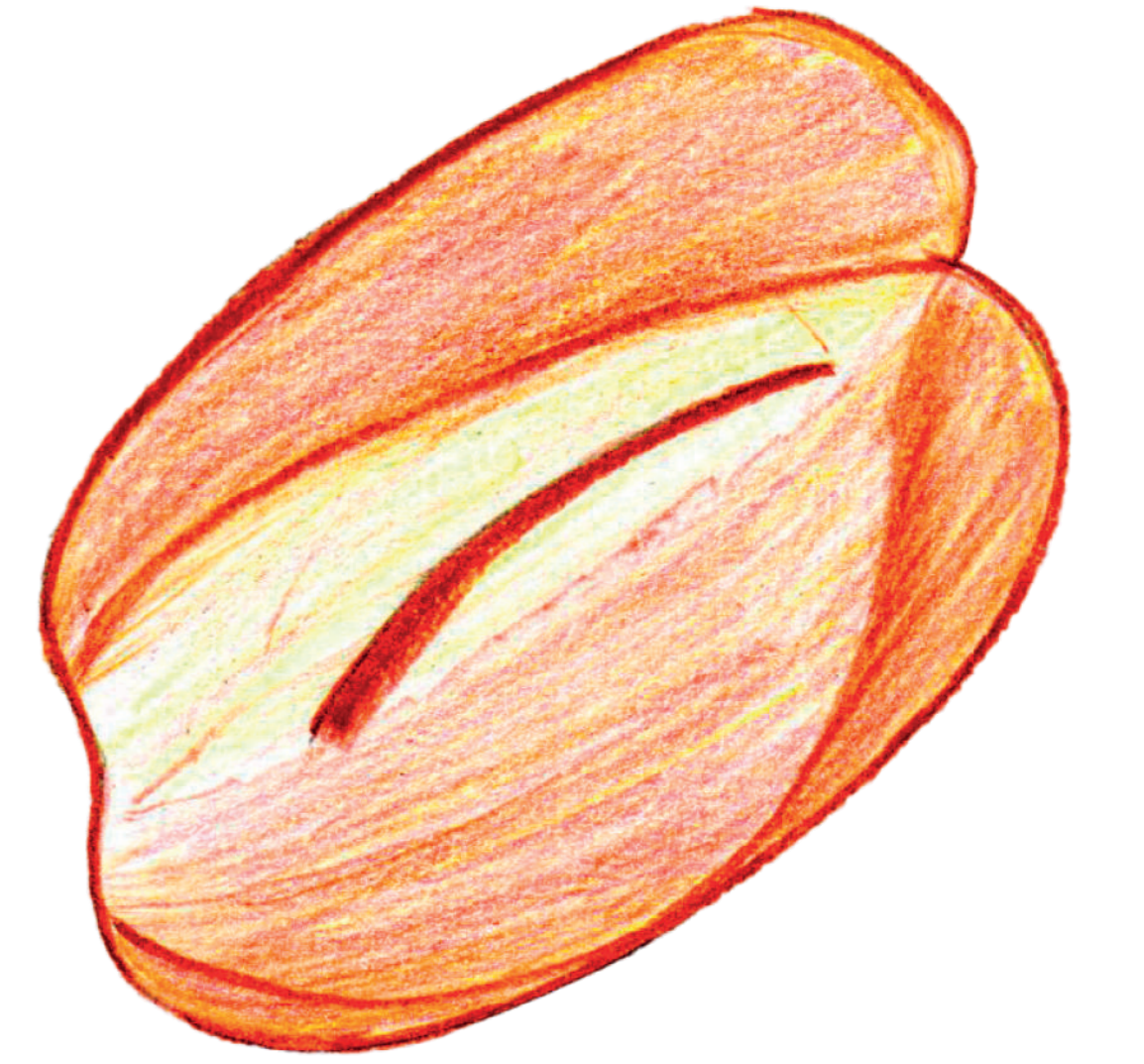
KH kh
Khuchhi



QH qh
Qhuna



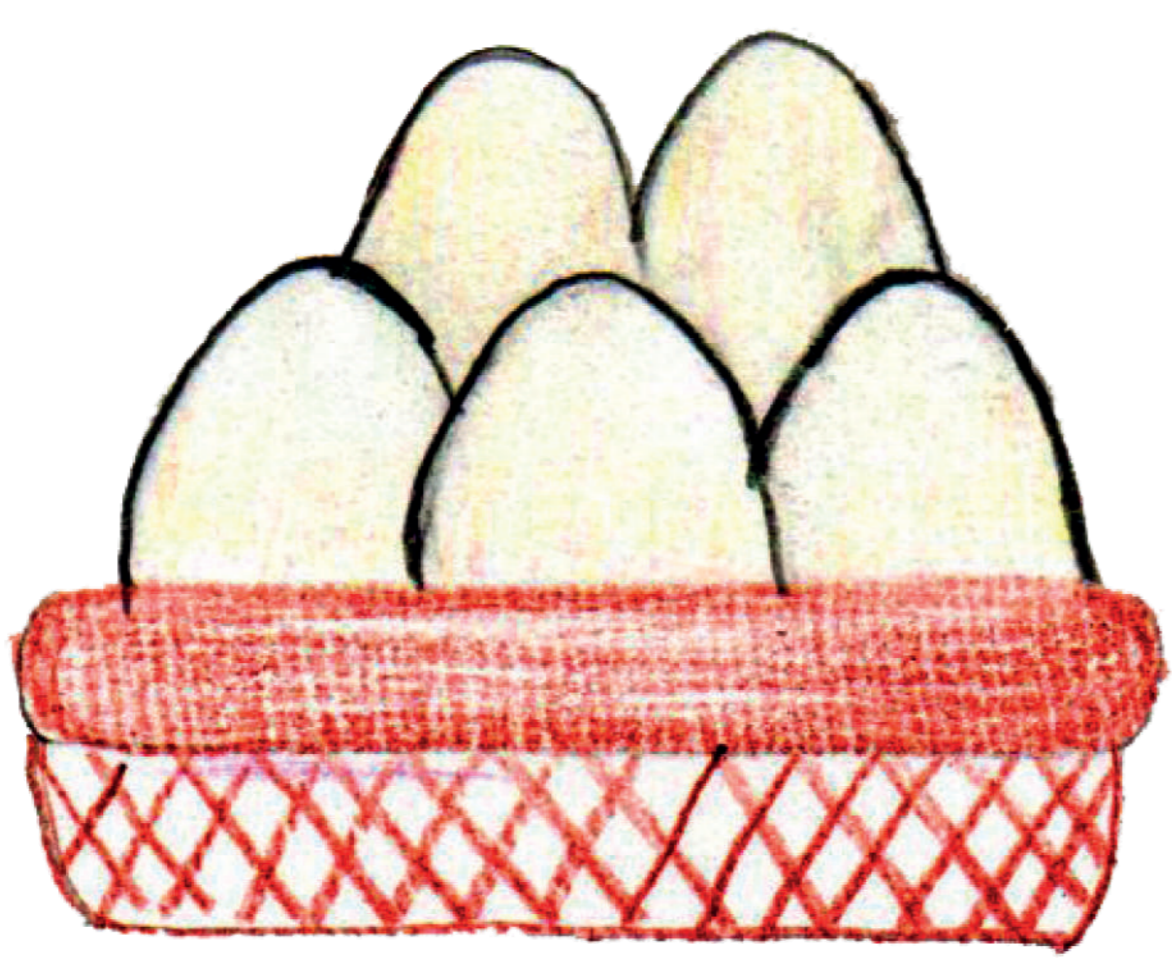
P' p'
P'iasaqa



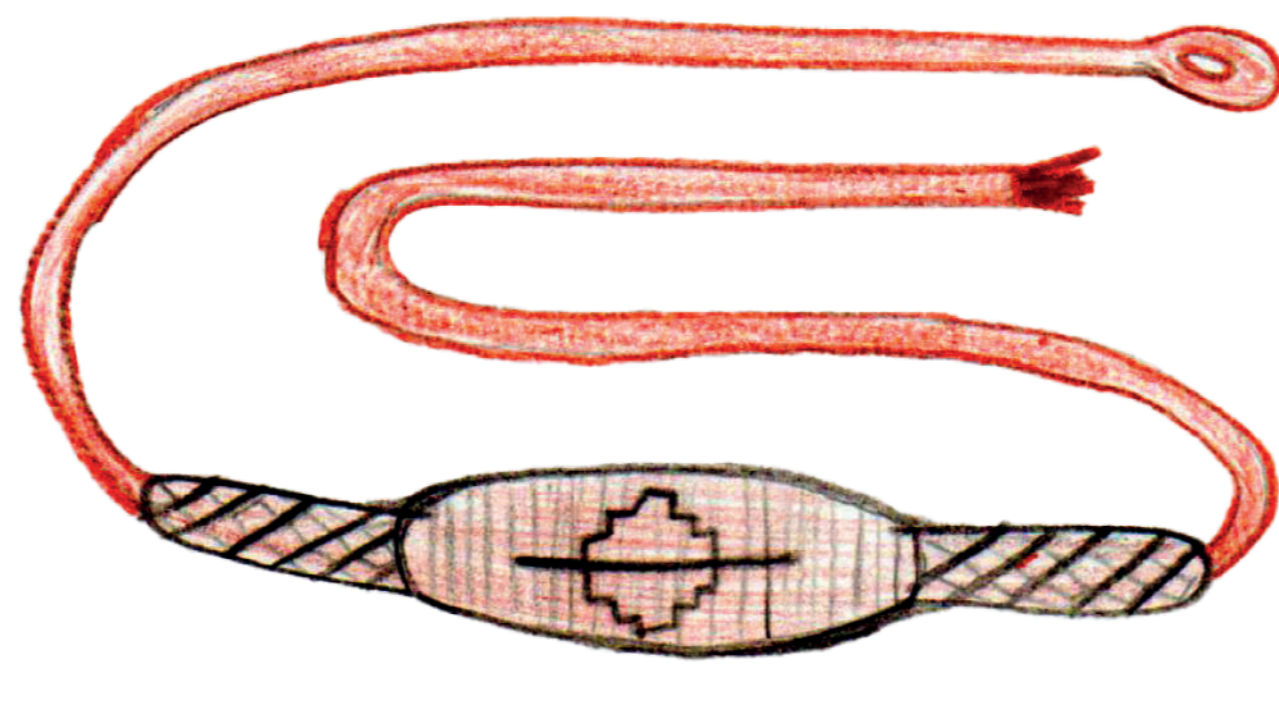
T' t'
T'an'a



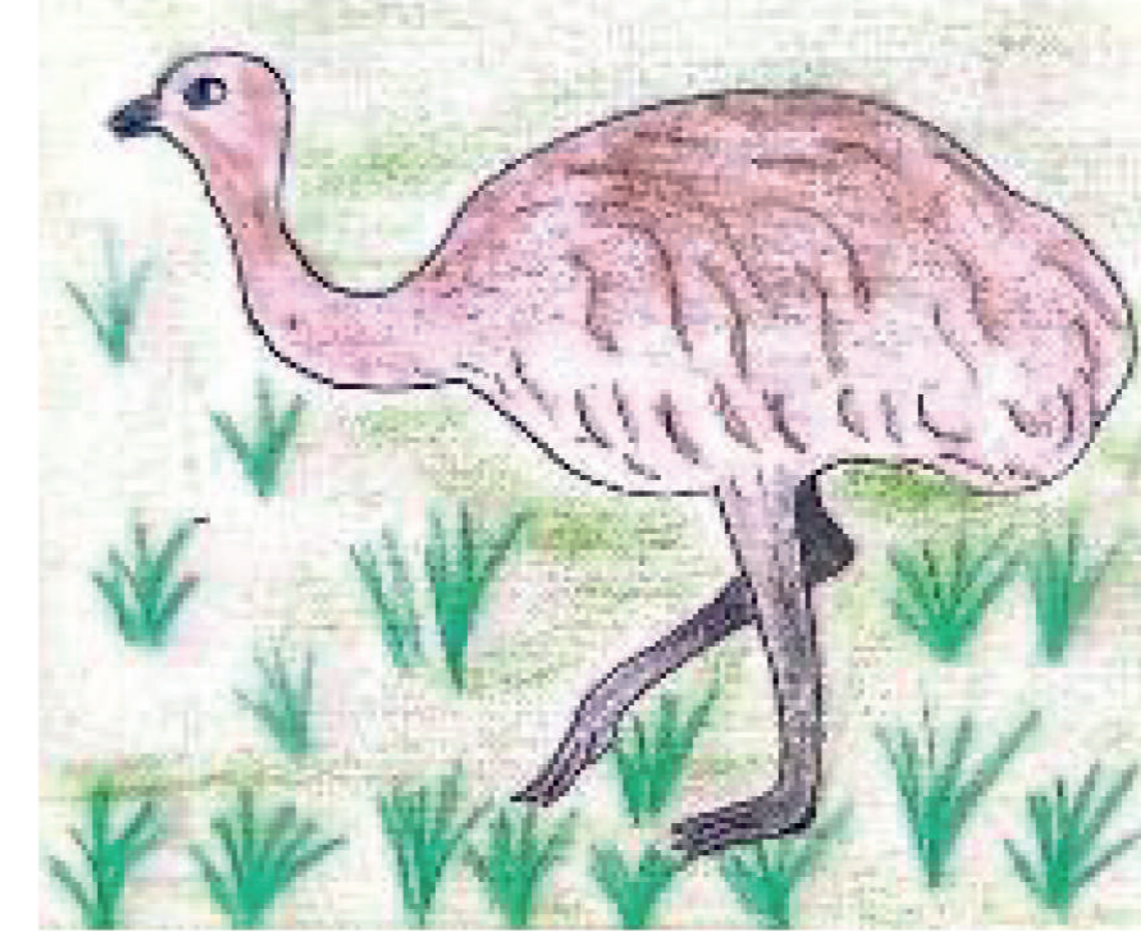
CH' ch'
Ch'uqi



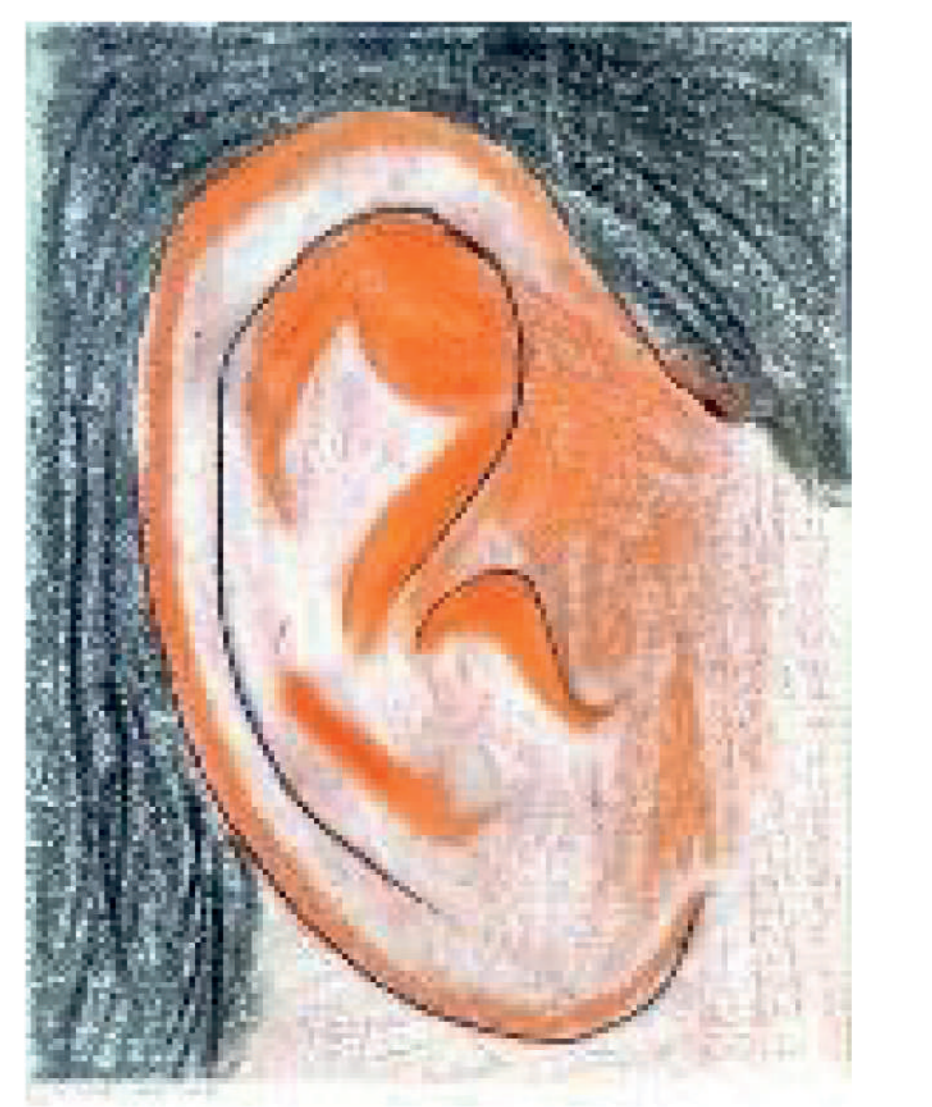
K' k'
K'anwa



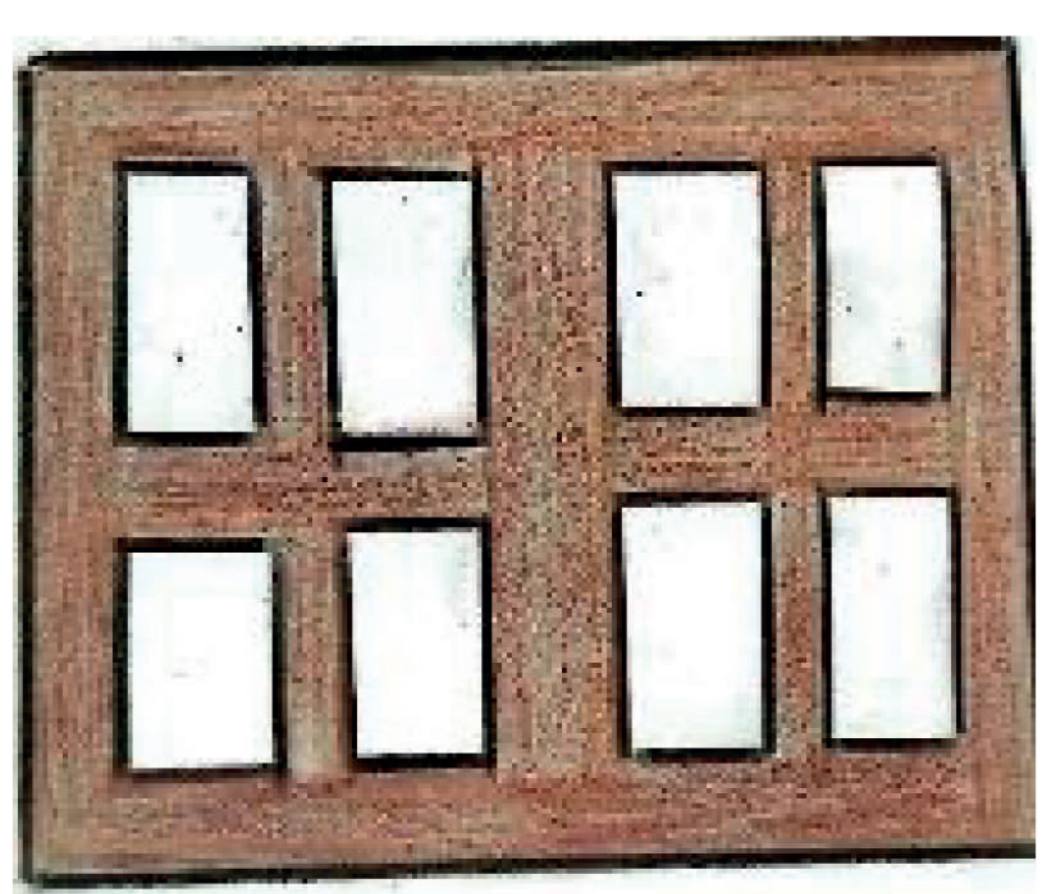
Q' q'
Q'urawa



S s
Suri



J j
Jinchu



X x
T'uxu



M m
Mujlli



N n
Nasa



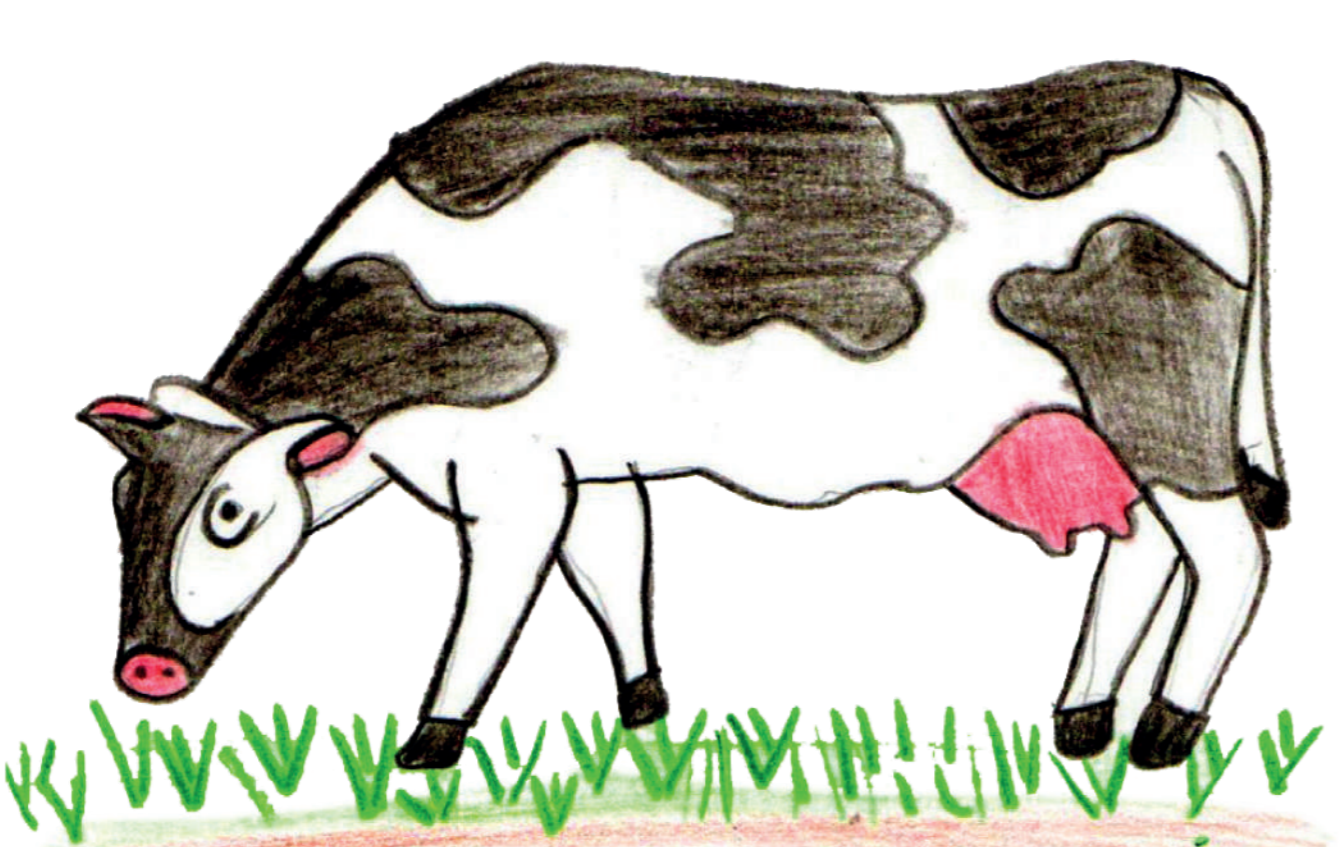
Ñ ñ
Ñik'uta



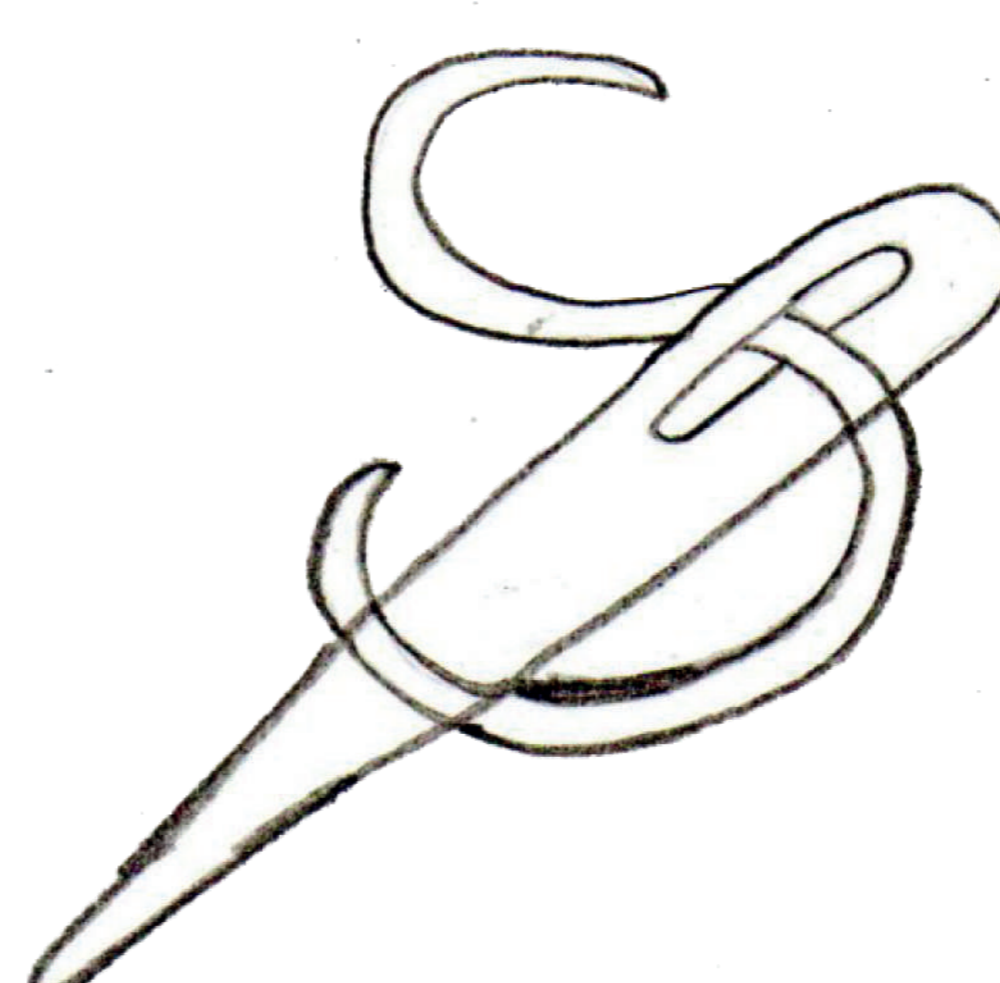
L l
Laxra



LL ll
Lluch'u



W w
Waka



Y y
Yarwi



R r
Riyata

